

## SCHEDULE TWO – EXTINGUISHED AREA

### A. Description of Extinguished Area

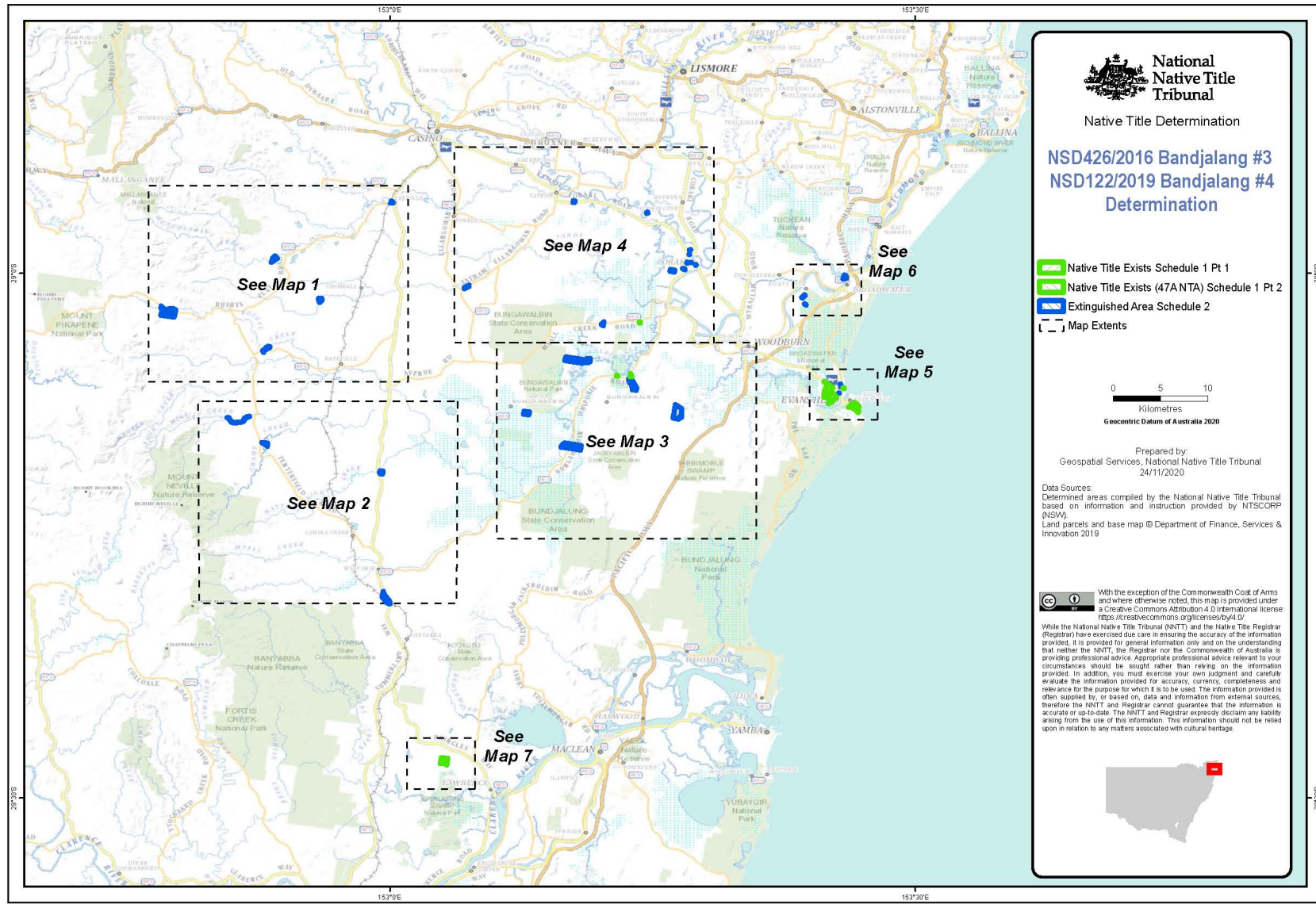
- (a) any land or waters upon which a road, which is or was a public work, was commenced to be constructed or established, on or before 23 December 1996;
- (b) any land or waters upon which a public road was dedicated or established under statute or common law on or before 23 December 1996; and
- (c) the land and waters described in the following list and depicted on the map in Part B of this Schedule hatched in blue (with hatching running diagonally upwards from left to right):

Description	Map sheet
Lot 1 DP 1179050	Map 2
Lot 1 Section 22 DP 758291	Map 4 Inset
Lot 1 Section 70 DP 758257	Map 4
Lot 103 DP 1005685	Map 1
Lot 107 DP 755630	Map 4
Lot 111 DP 755606	Map 1
Lot 114 DP 44814	Map 2
Lot 116 DP 1035163	Map 1
Lot 118 DP 46878	Map 1
Lot 12 Section 10 DP 758403	Map 5
Lot 120 DP 48518	Map 1
Lot 122 DP 1035166	Map 1

Lot 130 DP 755609	Map 3
Lot 134 DP 1101708	Map 3
Lot 175 DP 755631	Map 4 Inset
Lot 190 DP 755603	Map 3
Lot 2 Section 22 DP 758291	Map 4 Inset
Lot 23 DP 755616	Map 1
Lot 25 DP 264595	Map 4 Inset
Lot 253 DP 755691	Map 6
Lot 289 DP 755631	Map 4 Inset
Lot 290 DP 755631	Map 4 Inset
Lot 292 DP 755631	Map 4 Inset
Lot 3 Section 22 DP 758291	Map 4 Inset
Lot 3 Section 31 DP 758403	Map 5
Lot 314 DP 755631	Map 3
Lot 316 DP 755631	Map 4 Inset
Lot 323 DP 776335	Map 4 Inset
Lot 327 DP 776335	Map 4 Inset
Lot 332 DP 776335	Map 4 Inset

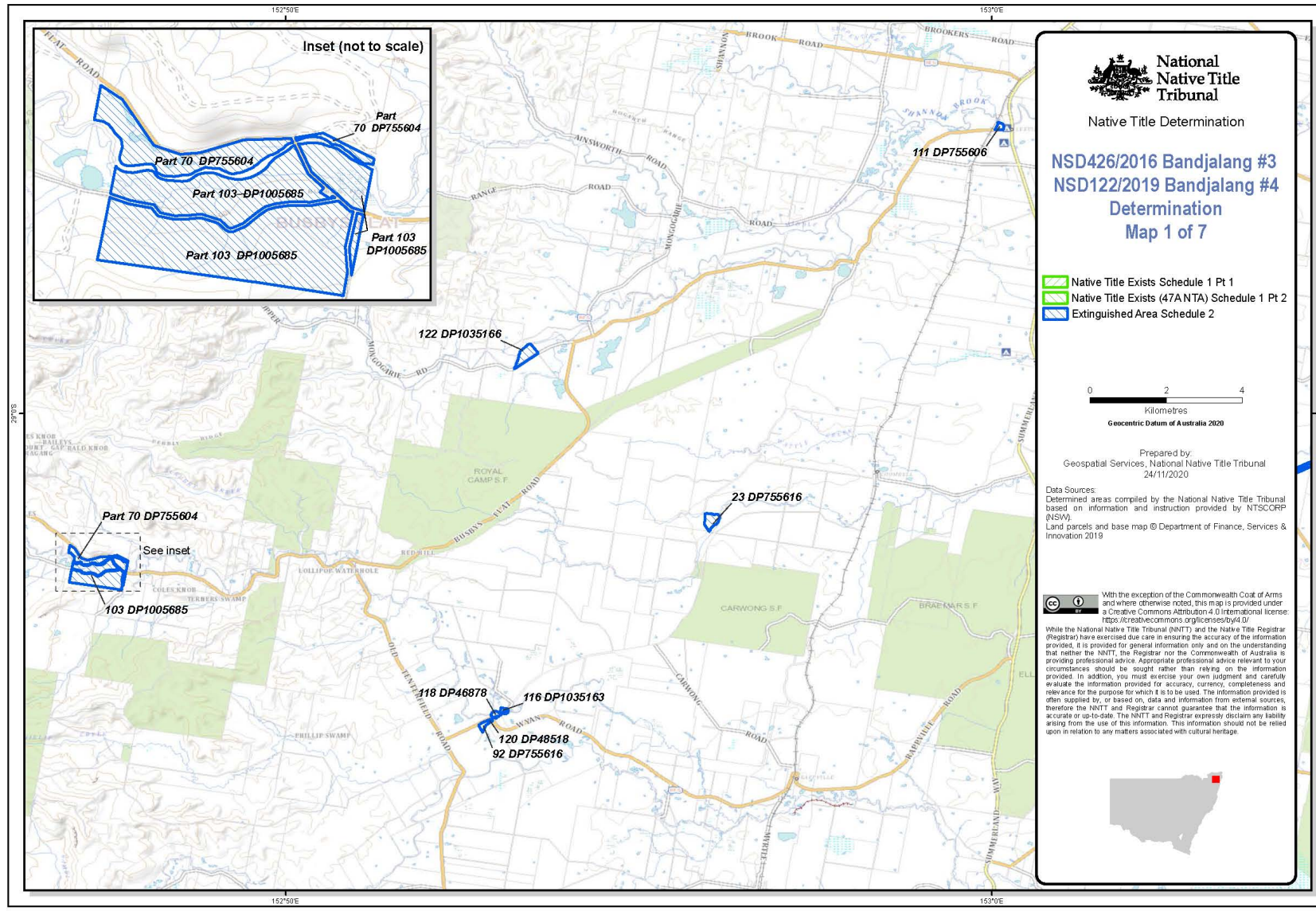
Lot 333 DP 776335	Map 4 Inset
Lot 358 DP 48494	Map 4
Lot 4 DP 615831	Map 4 Inset
Lot 41 DP 48752	Map 2
Lot 530 DP 721343	Map 6
Lot 548 DP 48725	Map 6
Part Lot 70 DP 755604 (Southern Severances)	Map 1 Inset
Lot 7001 DP 92547	Map 3
Lot 7301 DP 1163968	Map 2
Lot 9 Section 31 DP 758403	Map 5
Lot 9 Section 32 DP 758403	Map 5
Lot 92 DP 755616	Map 1
Lot 94 DP 1033356	Map 4

**B. Maps of Extinguished Area**



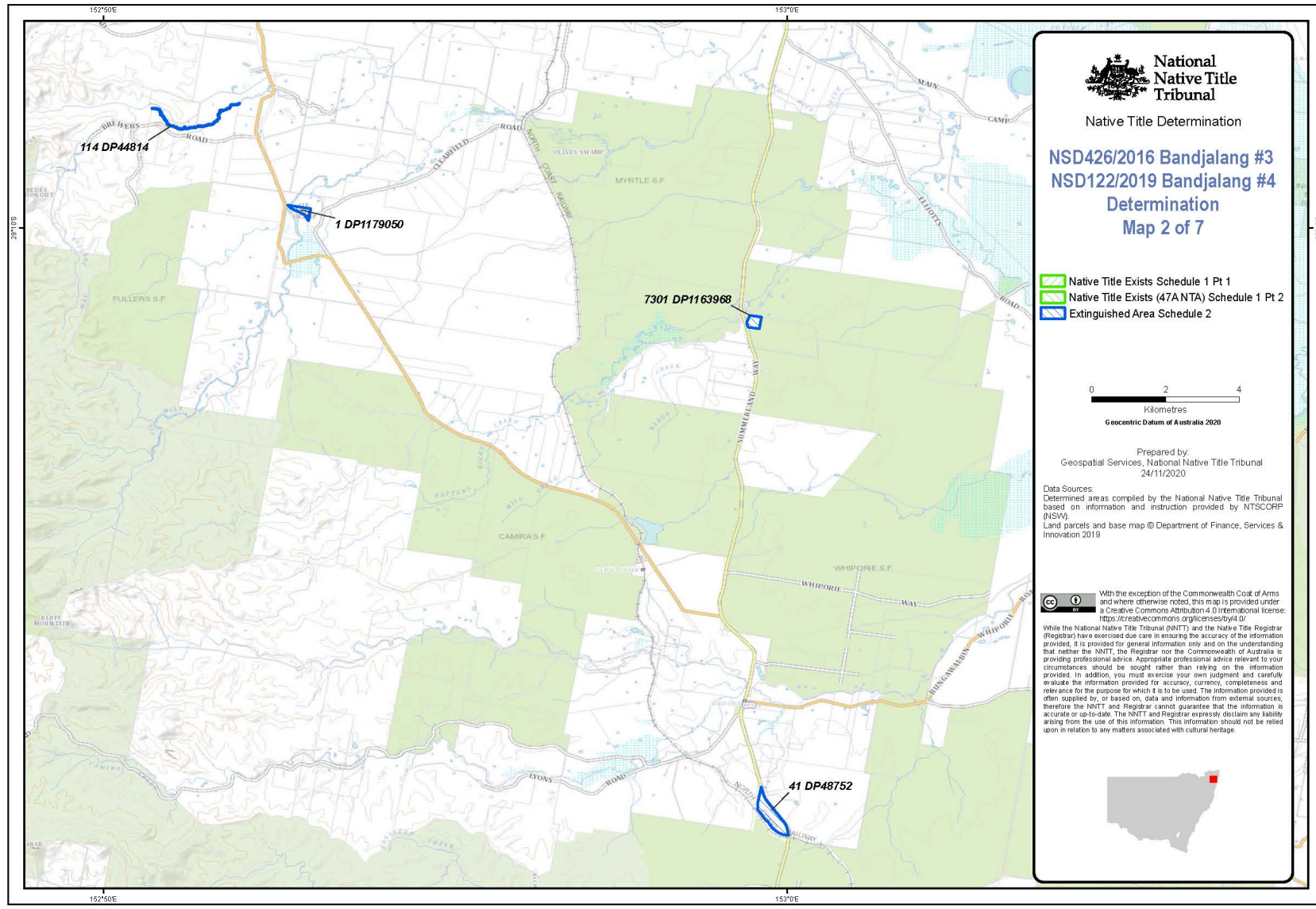
Filepath: P:\GEO\_INFO\Products\NSW\NTA\2016\NC2016\_001\_Bandjalang\_#3\Mapping\GT2020\_1494\_Determination\_Mapping\20201124\_NC2016\_001 and NC2019\_001\_Topo\_A3.rxd

Geotrack Number: GT2020/1494



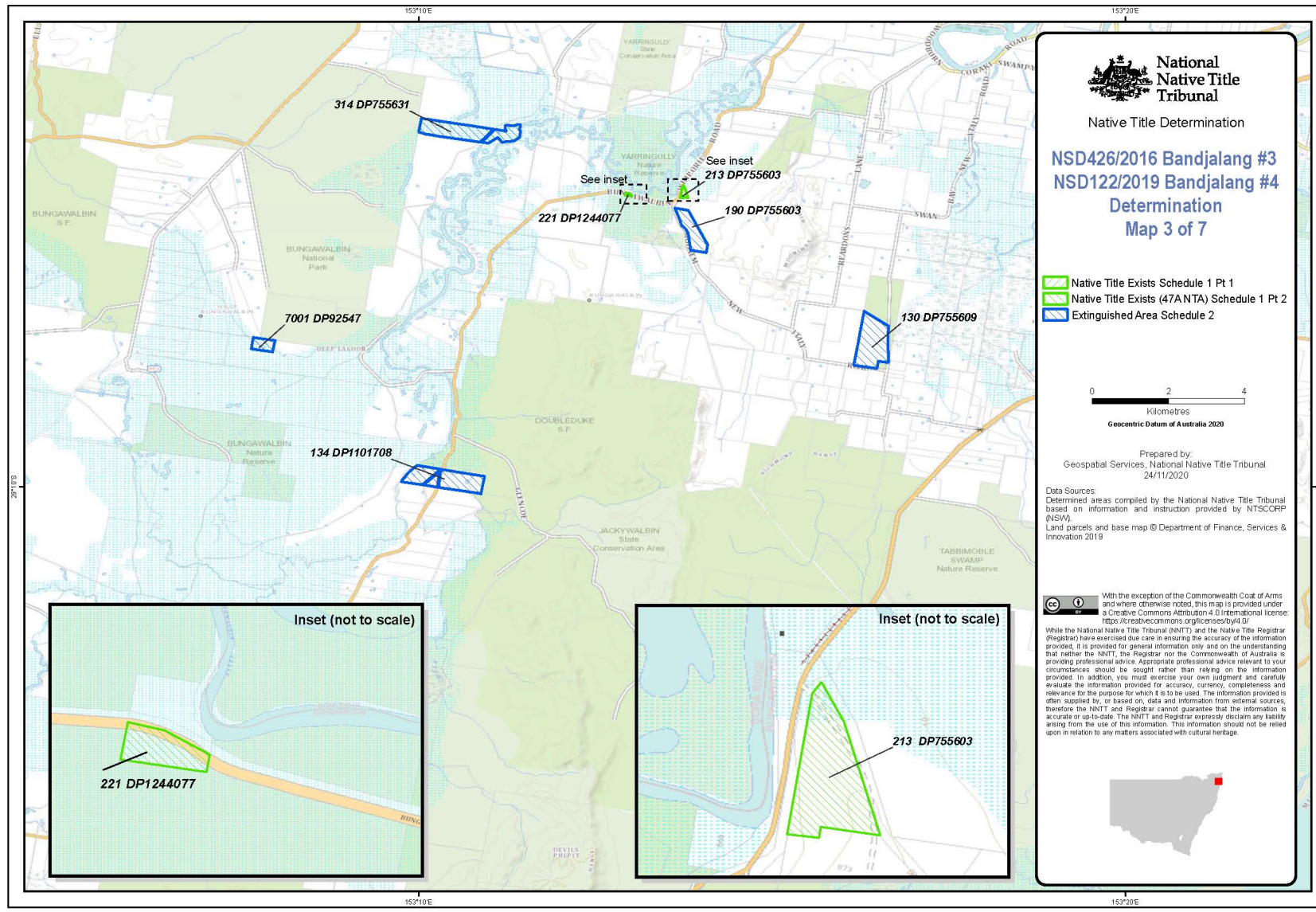
Filepath: P:\GEO\_INFO\Products\NSW\NTDA\2016\NC2016\_001\_Bandjalang\_#3\Mapping\GT2020\_1494\_Determination\_Mapping\20201124\_NC2016\_001 and NC2019\_001\_Topo\_Map\_1\_w\_Inset\_A3.mxd

Geotrack Number: GT2020/1494



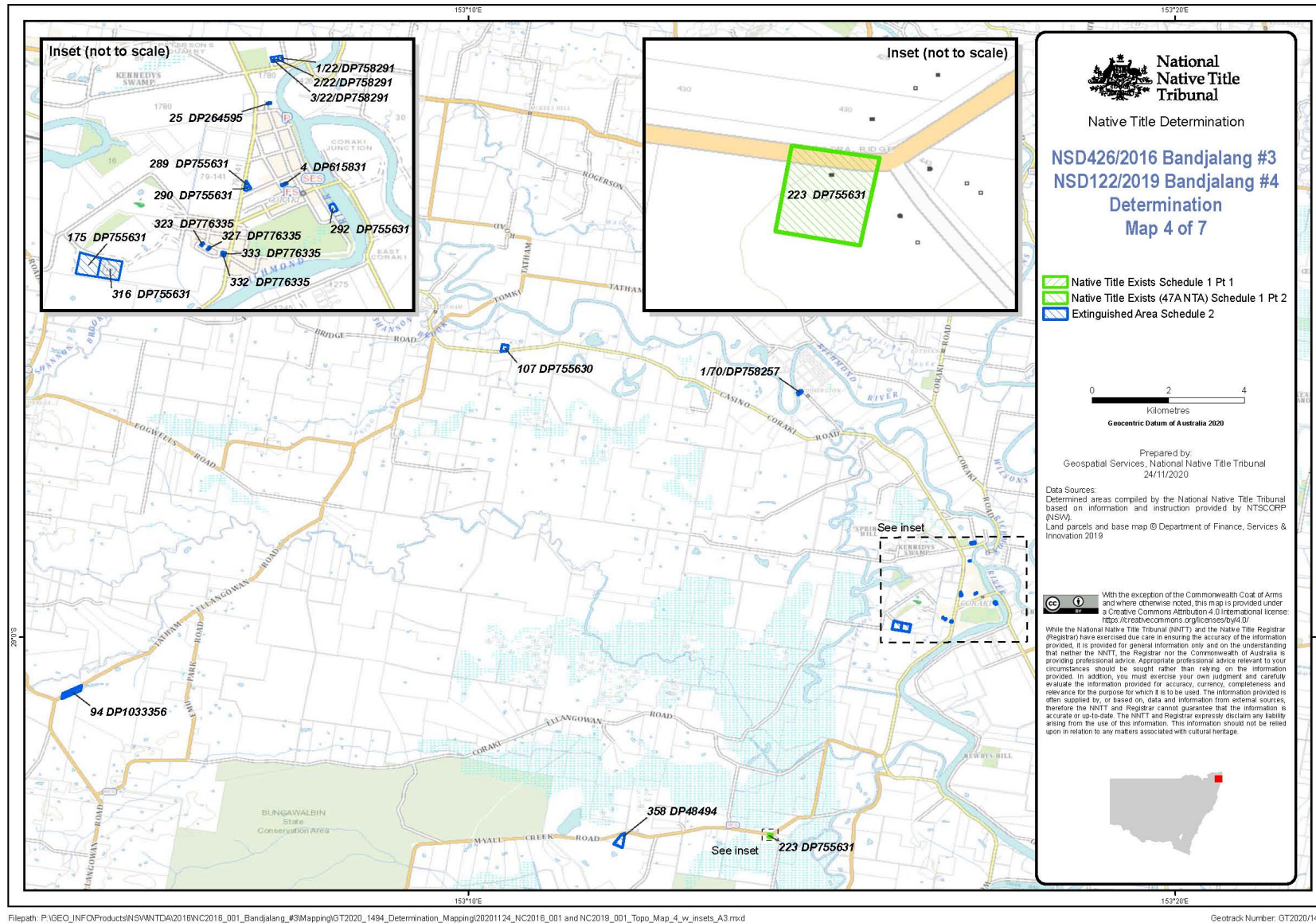
Filepath: P:\GEO\_INFO\Products\NSW\NTDA\2016\NC2016\_001\_Bandjalang\_#3\Mapping\GT2020\_1494\_Determination\_Mapping\20201124\_NC2016\_001 and NC2019\_001\_Topo\_Map\_2\_A3.mxd

Geotrack Number: GT2020/1494

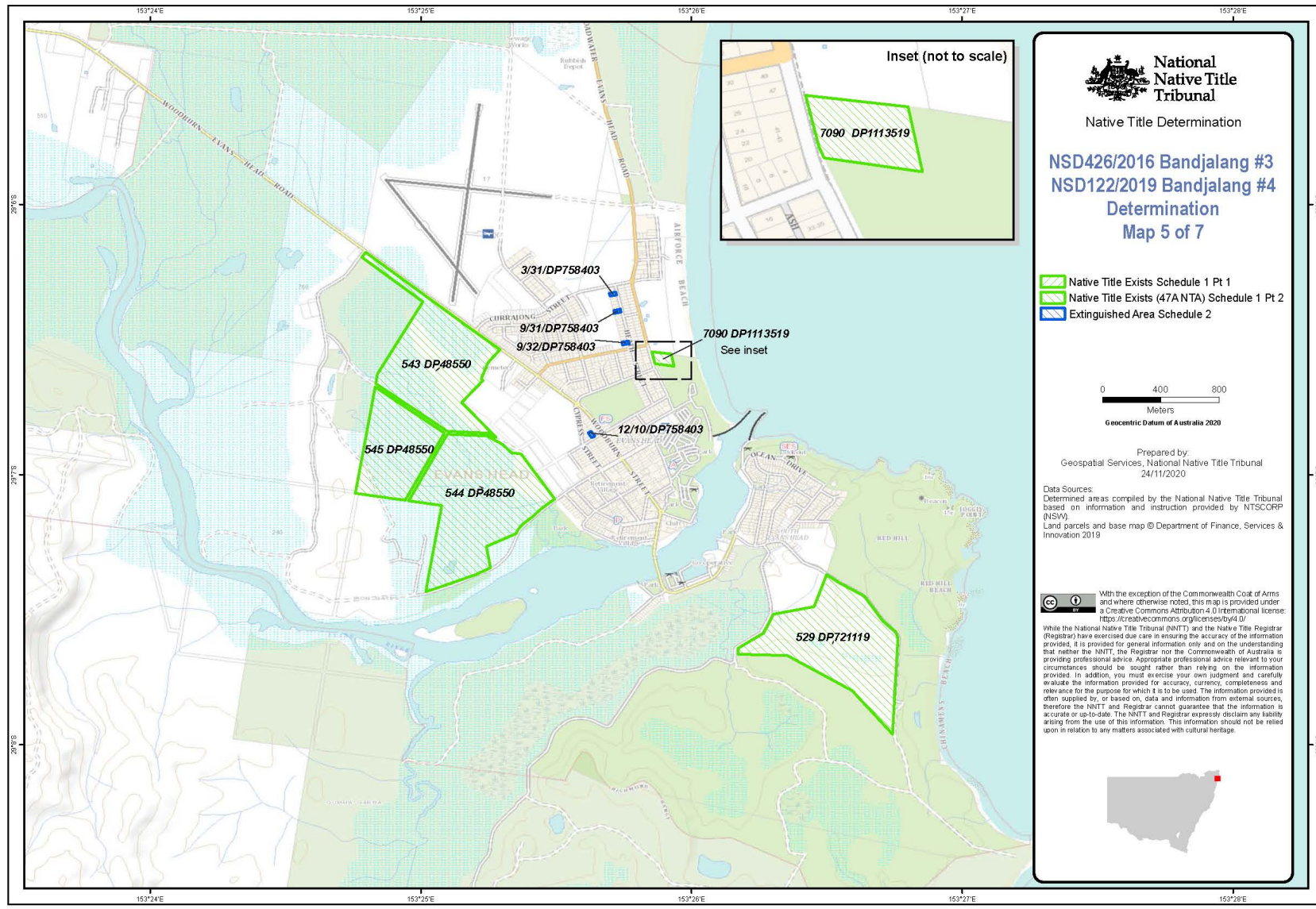


Filepath: P:\GEO\_INFO\Products\NSW\NTDA\2016\NC2016\_001\_Bandjalang\_#3\Mapping\GT2020\_1494\_Determination\_Mapping\20201124\_NC2016\_001 and NC2019\_001\_Topo\_Map\_3\_w\_Insets\_A3.mxd

Geotrack Number: GT2020/1494

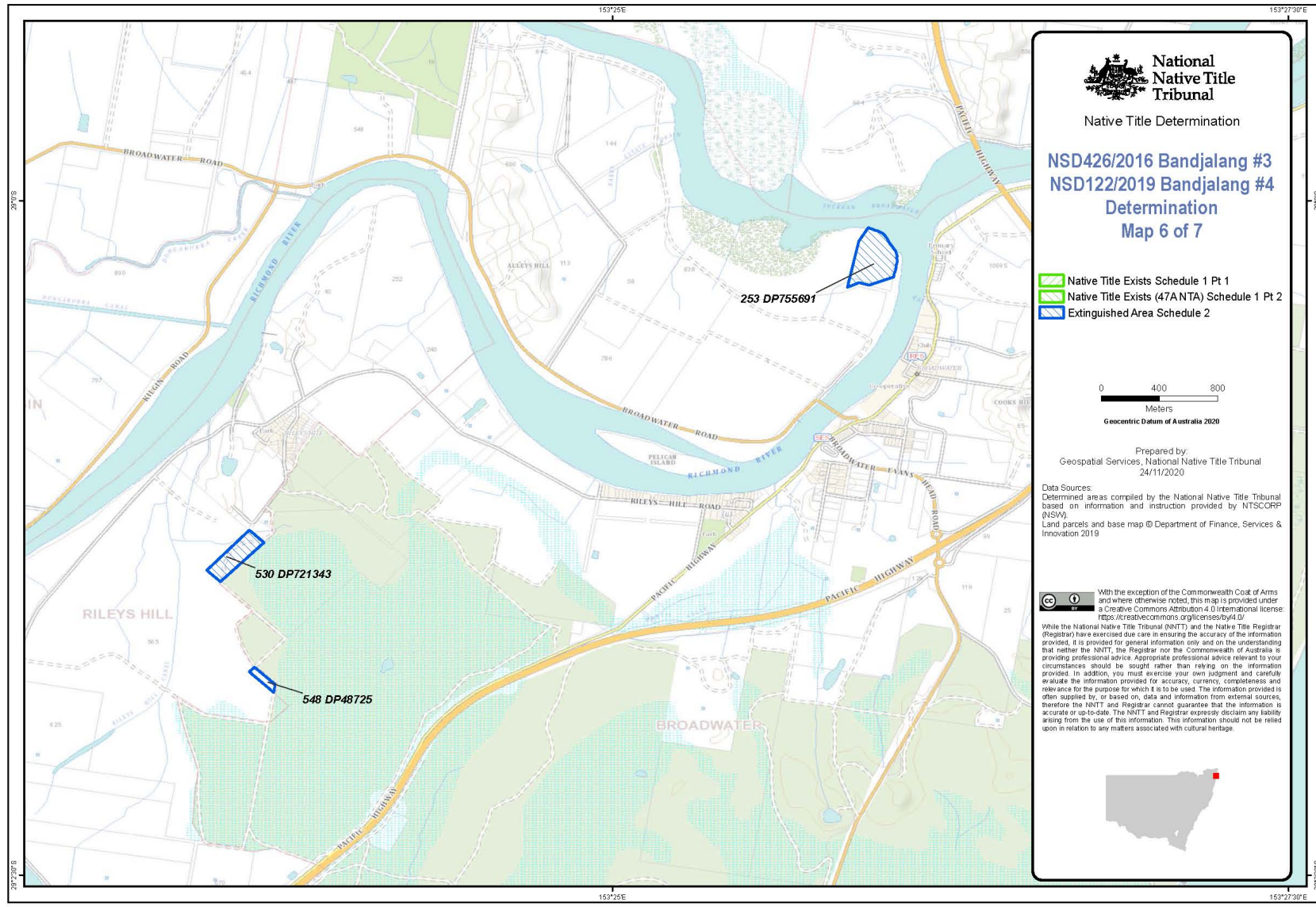






Filepath: P:\GEO\_INFO\Products\NSW\NTDA\2016\NCD2016\_001\_Bandjalang\_#3\Mapping\GT2020\_1494\_Determination\_Mapping\20201124\_NCD2016\_001 and NC2019\_001\_Topo\_Map\_5\_w\_insets\_A3.rxd

Geotrack Number: GT2020/1494



Filepath: P:\GEO\_INFO\Products\NSW\NTDA\2016\NC2016\_001\_Bandjalang\_#3\Mapping\GT2020\_1494\_Determination\_Mapping\2020\1124\_NC2016\_001 and NC2019\_001\_Topo\_Map\_6\_A3.mxd

Geotrack Number: GT2020/1494